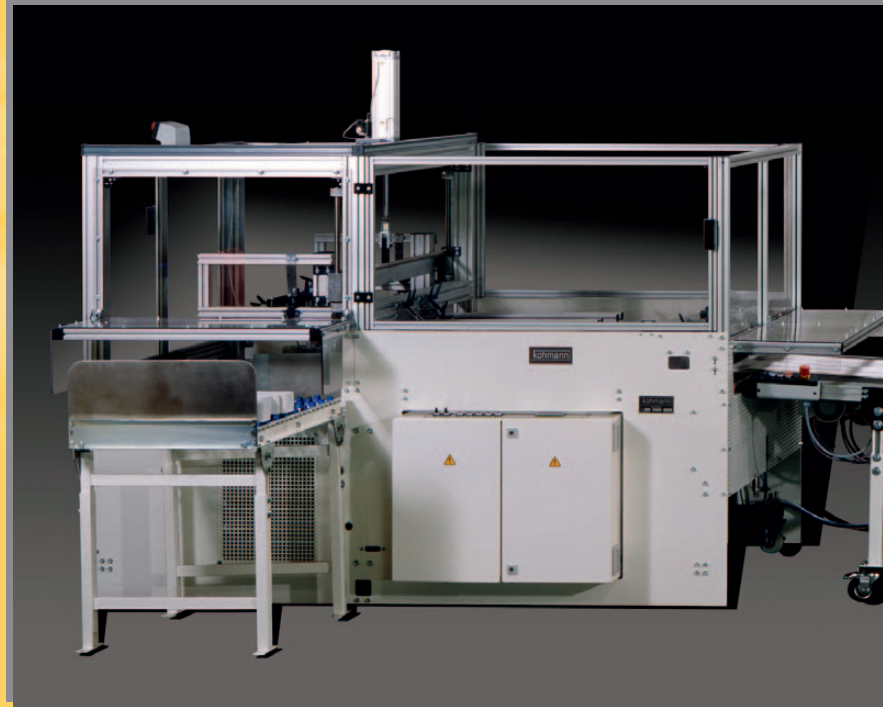
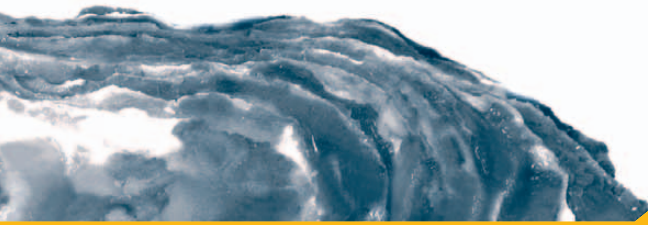




- ▶ **F-1120 Servo**
- ▶ **F-1440 Servo**
Window Patching Machine
for Cardboard Packaging

▶ **Open and versatile**

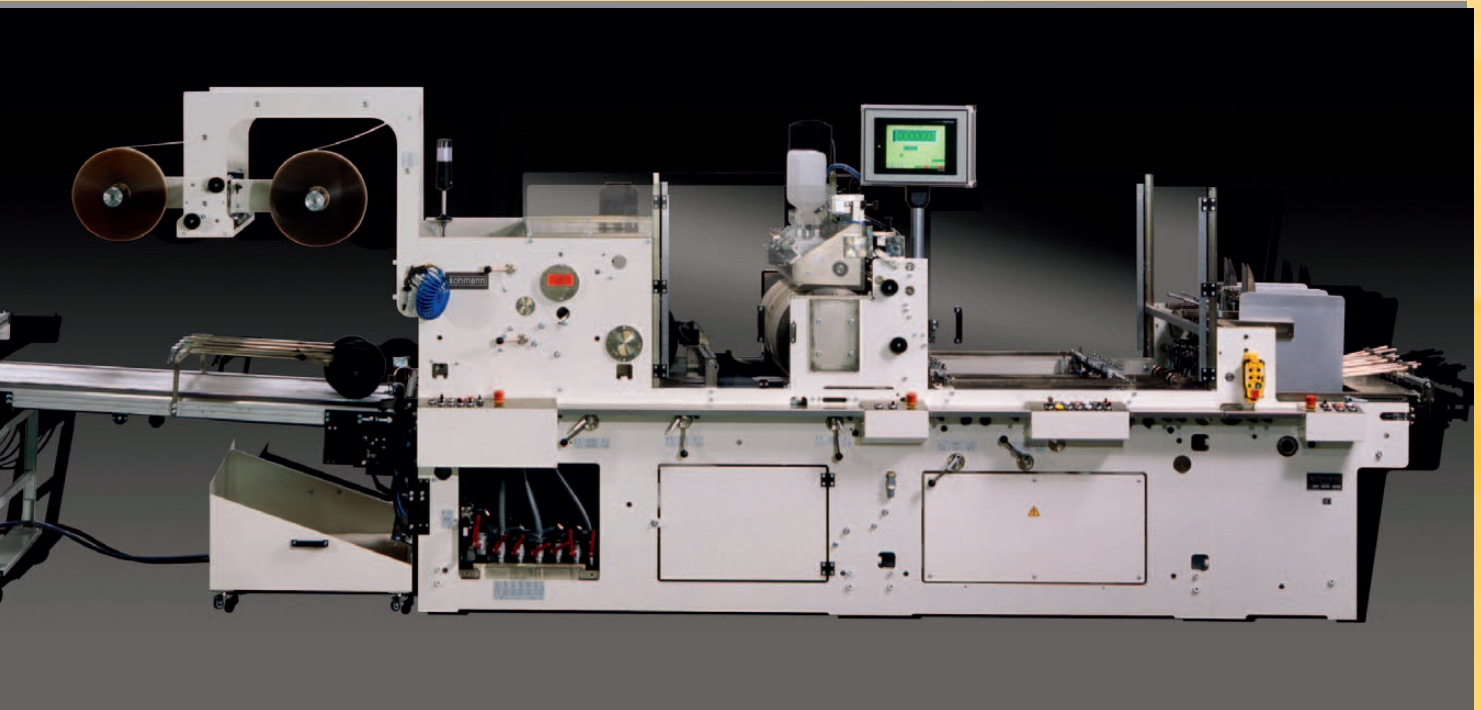


► Gigantically Expandable

Our window patching & lining machines are very easy to operate and to maintain and are made for high stress conditions. Besides the basic version we offer more than 20 different designs always suitable for various operations and multiply expandable.

The basic machine includes:

- servo technology for the timed belt feeder
- all cylinders are driven directly by servo motors
- glue unit with separate drive
- input and automatic adjustment of carton relevant dates are made via a large colour operator interface panel
- storage of more than 4000 carton data for repeat orders is possible
- Advance and retard of the stereo cylinder to the carton is carried out from the operator side
- Right/Left adjustment of the stereo cylinder is carried out from the operating side even with 2-stream operation
- max. 4-up operation possible
- Larger size ranges for 2up and 3up operation



- Micro-fine adjustments of board to glue and foil position whilst machine is running
- Online maintenance via modem worldwide
- Up to 4 streams possible
- operator friendly
- high production quality
- minimum change-over times
- computer-driven production control system with automatic adjustment

- maintenance free drive concept
- the machine is accessible for adjustment and maintenance work
- Infinitely variable delivery speed by separate drive
- all-purpose due to the ability to add extra modular devices

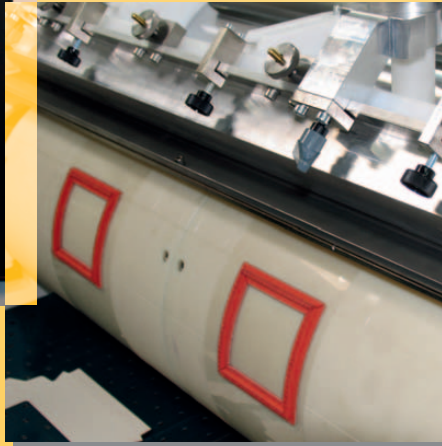
► Customized Solutions:

- New high-speed belt lifting system decrease carton damage and increase optimal blank spacing at high speeds, servo driven with automatic speed compensation.
- Standard timed belt feeder with timed stack lifters. The adjustable lifters with timed suction will allow for all types and configurations of cartons. This feed will allow all solid board and up to 6 mm corrugated, servo driven with automatic speed compensation.

Subject to changes

► www.kohmann.de

Fensteranklebern
Futterstoffanklebern
Faltschachteileklebern
Spezialim
Gebrauchim
Ständerlein
Sonderanlag



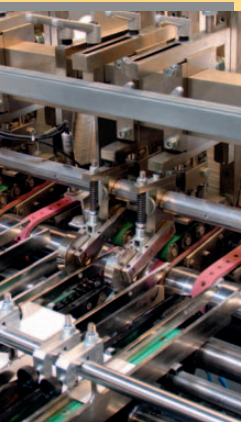
► Quality control systems

Our quality control system allows zero defective cartons to the customer:

- double sheet control
- missing foil control
- missing sheet control
- jam-up detectors at all machine positions
- signalling and automatic kick-off
- machine data readable by PPS systems

► Details that make a difference

- The single roller glue unit with doctor blade and side dams allows the operator to put the glue only where it is needed. This small area of glue will not dry out in production. Clean-up is very quick. The glue unit slides out on tracks.
- Glue pads are made off line on a make ready table. Stereo mounting the foil is used to mount glue pads on and then the foil clips onto the stereo cylinder. These stereo blankets can be saved for future jobs.



► Innovations

The programme for the PLC control developed by our engineers controls and protects all machine functions:

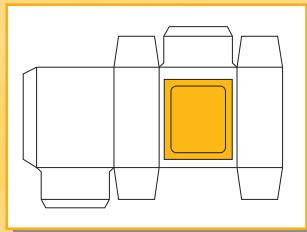
- Automatic setting programme of all quality control systems
- Suction belts drop in case of missing cartons
- Adjustable timed vacuum for feed belt
- Large production display

- Rate display in carton per hour
- Easy operation by multi function display
- Indication of incorrect operations
- Indication of security units
- Picture displays for set-up
- Online user manual
- Picture displays for faults
- Many other functions

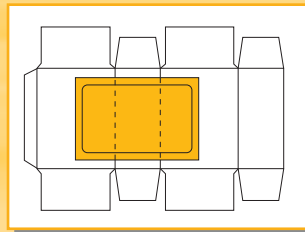
Subject to changes

► www.kohmann.de

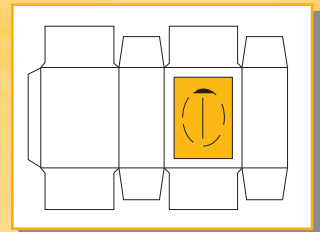
Fensteranklebern
Futterstoffanklebern
Fallschachteileanklebern
Spezialim
Gebrauchsim
Ständerlein
Spodereim



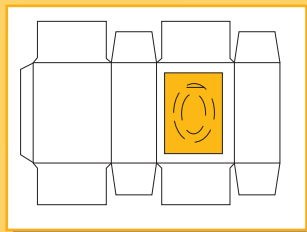
Normal window



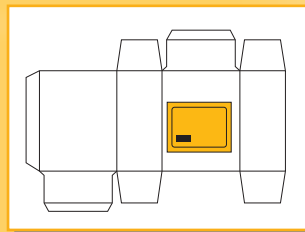
Continuous perforation or creasing



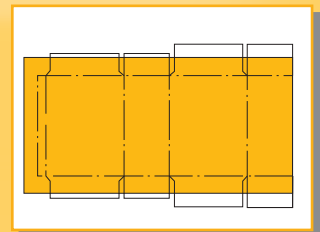
Continuous perforation or intermittent length slitting



Form slitting



Pre-printed foil



Inner lining

► Universal modular device

- Special feeder for special cartons
- Bag-in-box device for forming and sealing of inner tubes
- Continuously or intermittent running length cutting and perforating station
- Timed profile knife unit
- Photo-electronic register control for the converting of printed rolls
- Punching & scoring unit for windows glued over edges, coming from rolls or as pre-cut blanks
- Pre-feeder for cartons
- Handle applicator
- Special pneumatic unwind unit for big rolls
- Semi and fully automatic unwind systems available
- Automatic stacker with transfer station
- Many other functions

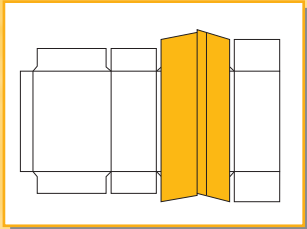
► Technical Data F-1440 Servo:

Format range, 1-stream operation

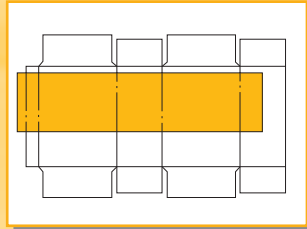
	min.	max.
carton length, mm	100	1230
	inch	3 ¹⁵ / ₁₆ "
carton width, mm	80	1440
	inch	3 ¹ / ₈ "
foil length, mm	60	800
	inch	2 ³ / ₈ "
foil width, mm	30	1130
	inch	1 ³ / ₁₆ "

Format range, 2-stream operation

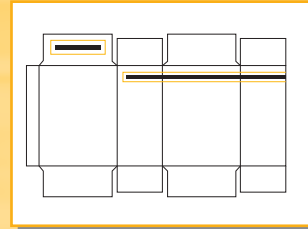
carton width, mm	705
	inch
foil width	depending on blank position
foil thickness	max. 300 microns
	min. 30 microns



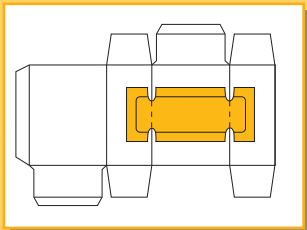
Sealed inner tube



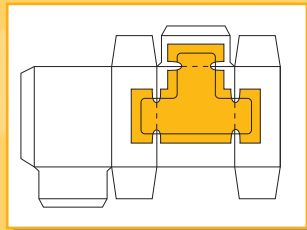
Inner partition placement



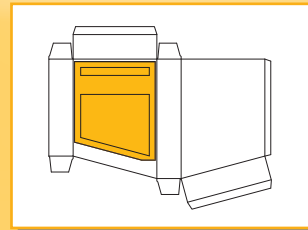
Carrier handle and/or tear strip



Scoring with punch-out coming from the reel or as a blank



Scoring with punch-out as blank



Oblique window

F-1120 Servo:

Format range, 1-stream operation

	min.	max.
carton length, mm	100	1230
inch	3 ¹⁵ / ₁₆ "	48 ¹³ / ₁₆ "
carton width, mm	80	1120
inch	3 ¹ / ₈ "	44 ² / ₁₆ "
foil length, mm	60	800
inch	2 ³ / ₈ "	31 ¹ / ₂ "
foil width, mm	30	840
inch	1 ³ / ₁₆ "	33 ¹ / ₁₆ "

Format range, 2-stream operation

carton width, mm	545
inch	21 ⁷ / ₁₆ "
foil thickness	max. 300 microns
	min. 30 microns

Required Space

length, mm	5500/5800
inch	216"
width, mm	1900/2200
inch	82"
height, mm	1700/1800
inch	66"

Total power requirement

kW	approx. 34
----	------------

Production Speeds (mechanical possible)

	1-stream	2-stream
1-up operation cartons over 610 mm	max. 200 pcs./min.	max. 400 pcs./min.
2-up operation cartons below 610 mm	max. 400 pcs./min.	max. 800 pcs./min.
3-up operation cartons below 385 mm	max. 600 pcs./min.	max. 1200 pcs./min.
4-up operation cartons below 270 mm	approx. 600-700 pcs./min.	approx. 1200-1400 pcs./min.
3- and 4-stream operation: values must be multiplied accordingly		

Subject to changes

▶ www.kohmann.de

Fensteranklebern
Futterstoffanklebern
Fallschachteileklebern
Spezialim
Gebrauchim
Standarleinr
Scydereinr

► Our Product Range:

- Window patching machines for carton blanks
- Pick Et Place window patching machines
- Folding box gluing machines
- Automatic stacking systems for
 - window patcher
 - narrow web flexo printing machines
- Compact disc sleeve machines
- CD/DVD tray placing machine
- Machines for special applications
- Film sealing machines for Gable Top Cartons

Kohmann GmbH & Co. KG Maschinenbau



► P.O. Box 10 06 55
40806 Mettmann
Germany

Benninghofer Weg 7
40822 Mettmann
Germany

T +49-21 04-9146 0
F +49-21 04-9146 50
sales@kohmann.de
www.kohmann.de
www.window-patcher.com