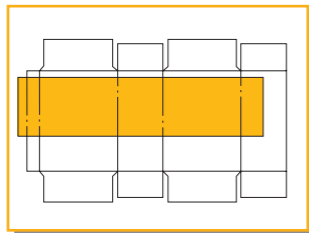
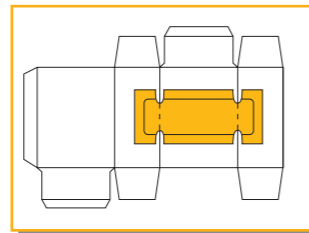


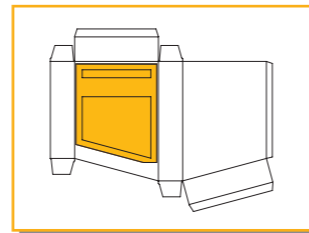
Score with cut-out



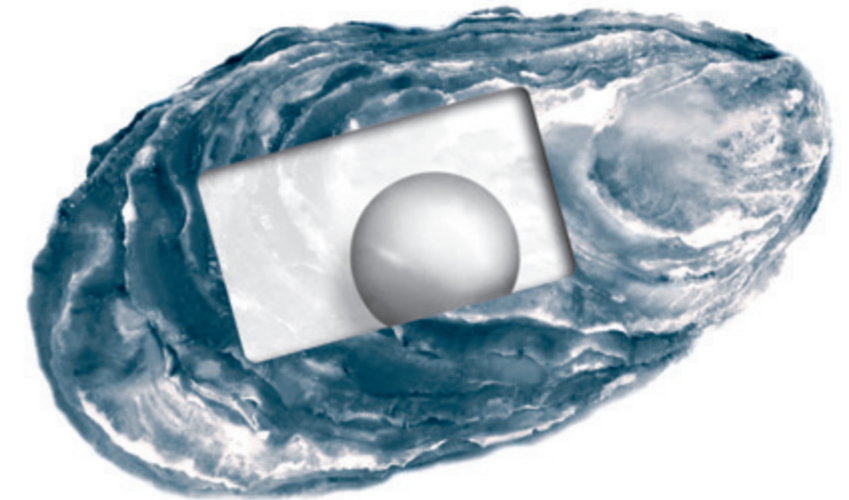
Inner partition placement



Scoring with punch-out coming from the reel or as a blank



Oblique window



► Our Product Range:

- Window patching machines for carton blanks
- Pick & Place window patching machines
- Film sealing machines for Gable Top Cartons
- Folding box gluing machines
- Automatic stacking systems for
 - window patcher
 - narrow web flexo printing machines
- Compact disc sleeve machines
- CD/DVD tray placing machine
- Machines for special applications

Kohmann GmbH & Co. KG
Maschinenbau



► P.O. Box 10 06 55
40806 Mettmann
Germany

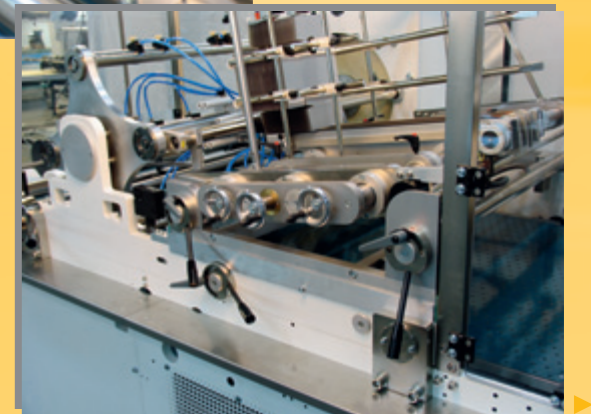
Benninghofer Weg 7
40822 Mettmann
Germany

T +49-21 04-9146 0
F +49-21 04-9146 50
sales@kohmann.de
www.kohmann.de

► Simply Pick

Pick & Place Window Patching Machine

► Fast and Flexible



► Flexible

Most flexible technology results in a high performance pick and place machine. A high degree of automatisaton keeps the set up time low. The precise movement of the rotary feeder results in highest converting speeds. The combination of both makes it a Kohmann: versatile and reliable.

► Convincing

- Automatic setting of most of the parameter
- Operator friendly thanks to data input via touch screen panel
- Full servo driven rotary feeder
- Easy to set magazine with new adjustment possibilities
- Electronic feeder with speed compensation

► Proven

Based on our model F-1100 Universal II the Simply Pick contains all the features of our successful machine. The open and robust design, the large cylinder size, a retractable glue station as well as today state of the art electronic components gives this machine new possibilities in the pick and place market.

► High-performance

New developments keep tolerances low and enable higher speeds, thus giving you advantages in today's competitive environment.

► Specifications:

Adjustment range, single stream operation

	min.	max.
Blank length, mm	100	1020
	inch	3 ¹⁵ / ₁₆ " 40 ¹ / ₈ "
Blank width, mm	80	1120
	inch	3 ¹ / ₈ " 44 ¹ / ₈ "
Film length, mm	80	480 (1-up operation)
	inch	3 ¹ / ₈ "
Film length, mm	80	300 (2-up operation)
	inch	3 ¹ / ₈ "
Film width, mm	80	300
	inch	3 ¹ / ₈ "

Adjustment range, double stream operation

	min.	max.
Blank width, mm	80	545
	inch	3 ¹ / ₈ " 21 ¹ / ₄ "
Film width, mm	80	depending on blank position

Total power consumption: 18,5 kW

Output figures

	SIMPLY PICK	
	1-stream	2-stream
1-up operation, blanks over 475 mm (>18.7")	5.000 pcs/h	10.000 pcs/h
2-up operation, blanks under 475 mm (<18.7")	10.000 pcs/h	20.000 pcs/h

Änderungen vorbehalten/Subject to change

► www.kohmann.de