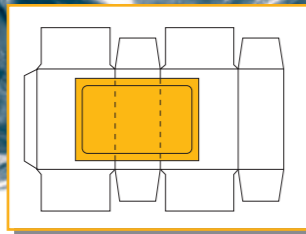
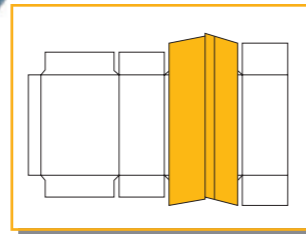


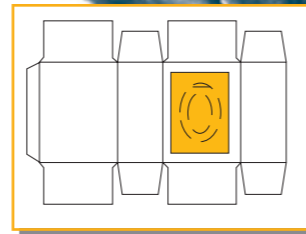
Normal window



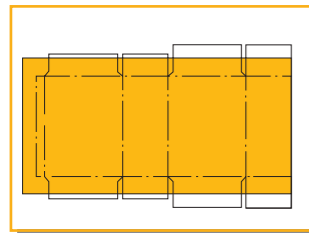
Continuous or crease perforation



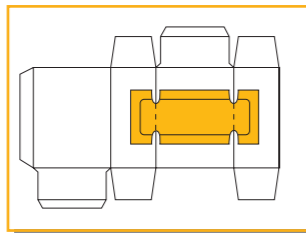
sealed inner tube/bag in the box



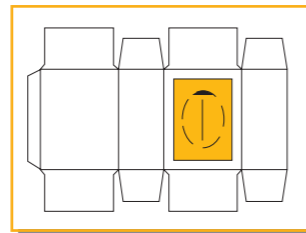
Form slitting



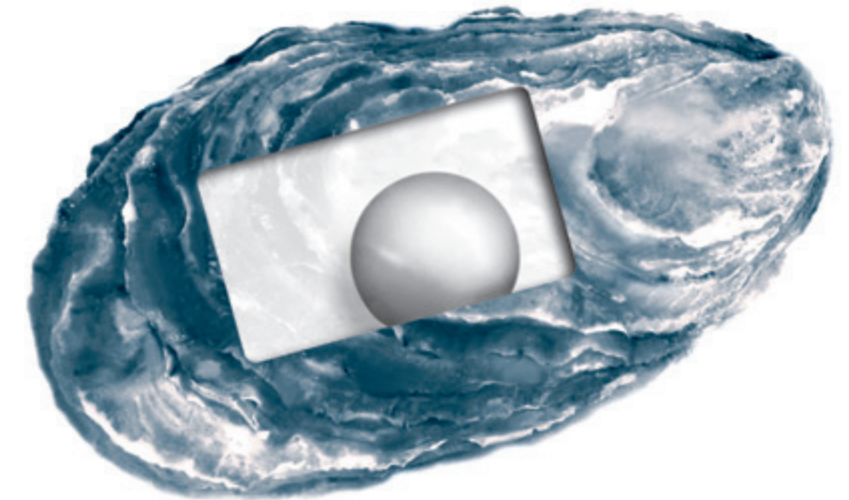
Lining material



Scoring with punch-out coming from the reel or as a blank



Continuous or intermittent length slitting perforation



► Our Product Range:

- Window patching machines for carton blanks
- Pick & Place window patching machines
- Film sealing machines for Gable Top Cartons
- Folding box gluing machines
- Automatic stacking systems for
 - window patcher
 - narrow web flexo printing machines
- Compact disc sleeve machines
- CD/DVD tray placing machine
- Machines for special applications

Kohmann GmbH & Co. KG
Maschinenbau



► P.O. Box 10 06 55
40806 Mettmann
Germany

Benninghofer Weg 7
40822 Mettmann
Germany

T +49-21 04-91460
F +49-21 04-9146 50
sales@kohmann.de
www.kohmann.de

► F-1000 Classic

Window Patching Machine

► Classic and Reliable



► Classic

Innovative technology combined with proven engineering offers the best in productivity and efficiency. Low investment costs and high processing performance guarantee future success. These principles guide the design of our window patching machines.

► Convincing

- Short set-up times thanks to computer aided setting assistance
- Various feeder concepts, choice of belt or rotary wheel feeder
- operator friendly thanks to data input via touch screen panel
- glue and film position can be adjusted during machine running
- multi-purpose options available

► Reliable and Versatile

The single roller glue unit is fully retractable and ensures full access to this station. Setting and cleaning is carried out within minutes.

Only a small residue of glue has to be disposed of when the work is finished.

Latest design of the timed belt feeder allows converting of solid and corrugated board up to 6 mm thickness.

Data input by graphic-capable display.

The PLC monitors the machine functions to reduce set-up time and to increase efficiency.

► Flexible

Whether you require a simple window on a standard blank or a more complicated product:

Our design allows the use of various options, either installed in our factory or retrofitted at a later point.

Options:

- tube forming station for production of inner tubes
- intermittent working length cutting or perforating unit
- punching and scoring device

► Specifications:

Adjustment range, single stream operation

	min.	max.
Blank length, mm	100	710
	inch	3 ¹⁵ / ₁₆ "
Blank width, mm	80	1000
	inch	3 ¹ / ₈ "
Film length, mm	40	520
	inch	1 ⁹ / ₁₆ "
Film width, mm	30	840
	inch	1 ³ / ₁₆ "

Adjustment range, double stream operation

	min.	max.
Blank width, mm	80	485
	inch	3 ¹ / ₈ "
Film width, mm	depending on blank position	

Total power consumption: 9 kW

Output figures

	F-1000 Classic	
	1-stream	2-stream
1-up operation, blanks over 330 mm (>13")	max. 150 pcs/min.	max. 300 pcs/min.
2-up operation, blanks under 330 mm (<13")	max. 300 pcs/min.	max. 600 pcs/min.

Änderungen vorbehalten/Subject to change

► www.kohmann.de